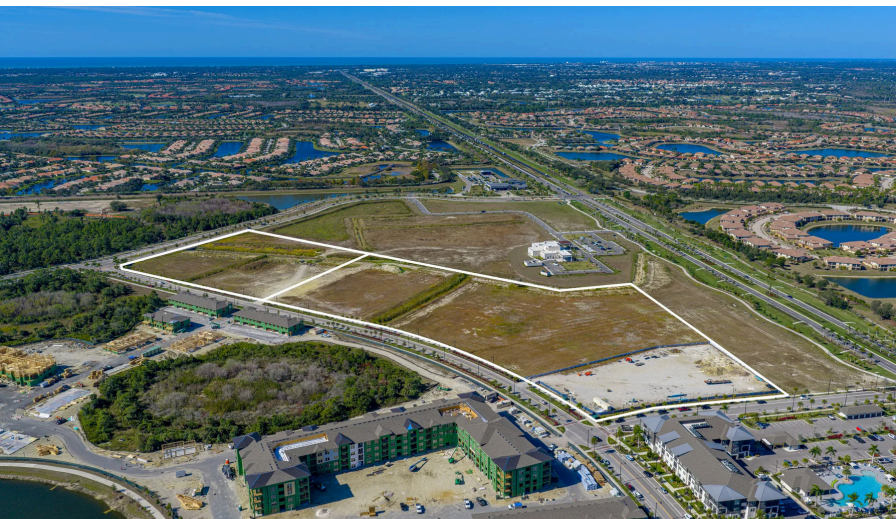
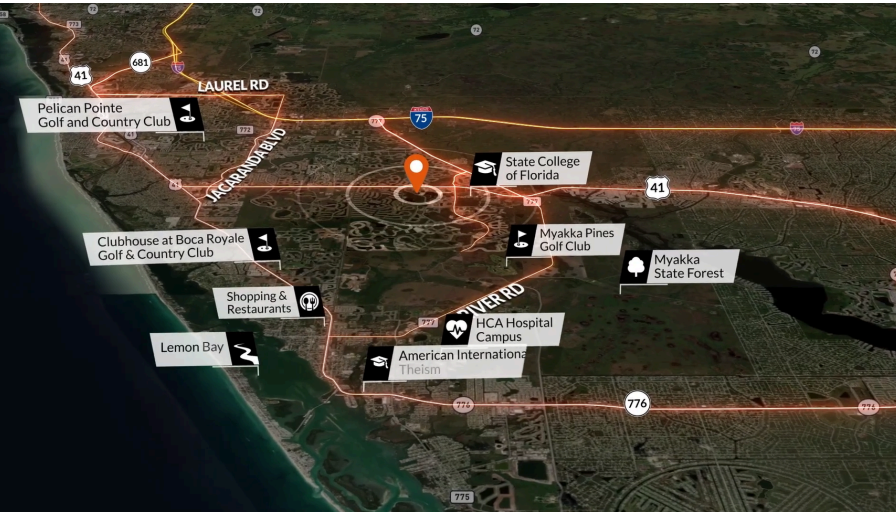


WELLEN PARK OFFICE PARCELS

Sunglow Boulevard | North Port, FL, 34293

developnorthportfl.gov

LAND FOR SALE
8,122,394 SF
DEVELOPMENT
READY SPACE



PROPERTY HIGHLIGHTS

- Located within Wellen Park, one of the fastest-growing master-planned communities in the nation
- 18.65-acre development opportunity
- Office entitlements in place
- Development-ready with offsite retention completed
- Utility access available
- Strategic location between Sarasota and Fort Myers
- Proximity to major highways and regional access
- Positioned within a high-growth, mixed-use environment